

Piccolo

# OkMEA Scale Sets

Set 1

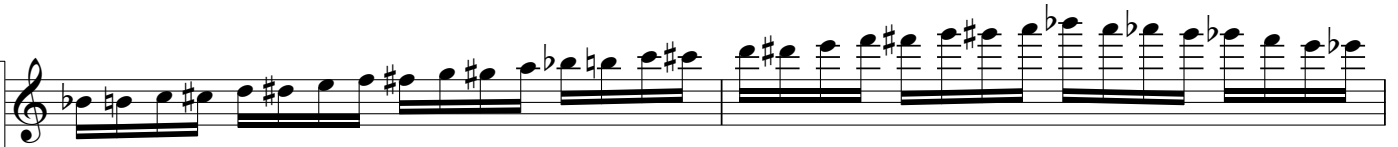
Concert  
A



Concert  
Db



Concert  
Bb  
Chromatic



Set 2

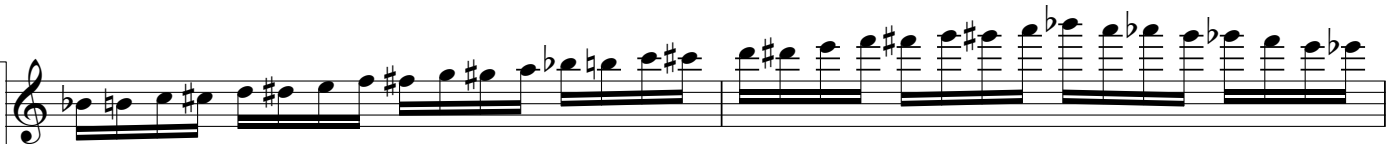
Concert  
D



Concert  
Gb



Concert  
Bb  
Chromatic



Piccolo

Set 3

Concert  
G

Concert  
B

Concert  
Bb  
Chromatic

Set 4

Concert  
C

Concert  
E

Concert  
Bb  
Chromatic

# OMEA Scale Sets

Flute

## Set 1

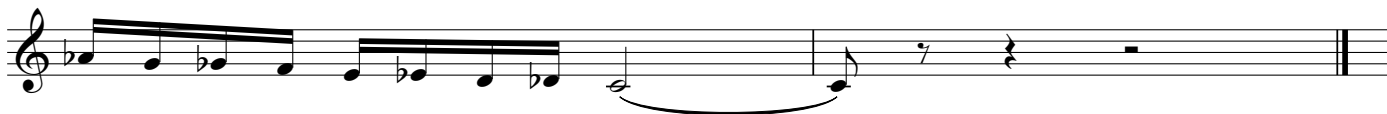
Concert  
A



Concert  
Db



Concert  
C  
Chromatic



## Set 2

Concert  
D



Concert  
Gb



Concert  
C  
Chromatic



Flute

Set 3

Concert  
G

Musical staff for Concert G, Set 3. The staff is in treble clef with a key signature of one sharp (F#). The melody consists of eighth and sixteenth notes, starting on G4 and ascending to G5, then descending and ending on G4 with a fermata.

Concert  
B

Musical staff for Concert B, Set 3. The staff is in treble clef with a key signature of three sharps (F#, C#, G#). The melody consists of eighth and sixteenth notes, starting on B4 and ascending to B5, then descending and ending on B4 with a fermata.

Concert  
C  
Chromatic

Musical staff for Concert C Chromatic, Set 3. The staff is in treble clef with a key signature of one sharp (F#). The melody is a chromatic scale starting on C4 and ascending to C5.

Musical staff for Concert C Chromatic, Set 3. The staff is in treble clef with a key signature of one sharp (F#). The melody is a chromatic scale starting on C5 and descending to C4.

Musical staff for Concert C Chromatic, Set 3. The staff is in treble clef with a key signature of one flat (Bb). The melody is a chromatic scale starting on C4 and descending to C3.

Set 4

Concert  
C

Musical staff for Concert C, Set 4. The staff is in treble clef with a key signature of one sharp (F#). The melody consists of eighth and sixteenth notes, starting on C4 and ascending to C5, then descending and ending on C4 with a fermata.

Concert  
E

Musical staff for Concert E, Set 4. The staff is in treble clef with a key signature of three sharps (F#, C#, G#). The melody consists of eighth and sixteenth notes, starting on E4 and ascending to E5, then descending and ending on E4 with a fermata.

Concert  
C  
Chromatic

Musical staff for Concert C Chromatic, Set 4. The staff is in treble clef with a key signature of one sharp (F#). The melody is a chromatic scale starting on C4 and ascending to C5.

Musical staff for Concert C Chromatic, Set 4. The staff is in treble clef with a key signature of one sharp (F#). The melody is a chromatic scale starting on C5 and descending to C4.

Musical staff for Concert C Chromatic, Set 4. The staff is in treble clef with a key signature of one flat (Bb). The melody is a chromatic scale starting on C4 and descending to C3.

# OkMEA Scale Sets

Oboe

## Set 1

Concert A

Musical notation for Concert A scale in Set 1, starting on A4 and ending on A5.

Concert Db

Musical notation for Concert Db scale in Set 1, starting on D4 and ending on D5.

Concert C Chromatic

Musical notation for Concert C Chromatic scale in Set 1, starting on C4 and ending on C5.

Musical notation for the descending part of the Concert C Chromatic scale in Set 1.

## Set 2

Concert D

Musical notation for Concert D scale in Set 2, starting on D4 and ending on D5.

Concert Gb

Musical notation for Concert Gb scale in Set 2, starting on Gb4 and ending on Gb5.

Concert C Chromatic

Musical notation for Concert C Chromatic scale in Set 2, starting on C4 and ending on C5.

Musical notation for the descending part of the Concert C Chromatic scale in Set 2.

Set 3

Concert  
G



Concert  
B



Concert  
C  
Chromatic



Set 4

Concert  
C



Concert  
E



Concert  
C  
Chromatic



Bassoon

# OkMEA Scale Sets

## Set 1

Concert  
A



Musical notation for Concert A, Set 1. The staff is in bass clef with a key signature of two sharps (F# and C#). The scale consists of: C2, C#2, D2, D#2, E2, E#2, F2, F#2, G2, G#2, A2, A#2, B2, B#2, C3, C#3, D3, D#3, E3, E#3, F3, F#3, G3, G#3, A3, A#3, B3, B#3, C4, C#4, D4, D#4, E4, E#4, F4, F#4, G4, G#4, A4, A#4, B4, B#4, C5, C#5, D5, D#5, E5, E#5, F5, F#5, G5, G#5, A5, A#5, B5, B#5, C6, C#6, D6, D#6, E6, E#6, F6, F#6, G6, G#6, A6, A#6, B6, B#6, C7, C#7, D7, D#7, E7, E#7, F7, F#7, G7, G#7, A7, A#7, B7, B#7, C8, C#8, D8, D#8, E8, E#8, F8, F#8, G8, G#8, A8, A#8, B8, B#8, C9, C#9, D9, D#9, E9, E#9, F9, F#9, G9, G#9, A9, A#9, B9, B#9, C10, C#10, D10, D#10, E10, E#10, F10, F#10, G10, G#10, A10, A#10, B10, B#10, C11, C#11, D11, D#11, E11, E#11, F11, F#11, G11, G#11, A11, A#11, B11, B#11, C12, C#12, D12, D#12, E12, E#12, F12, F#12, G12, G#12, A12, A#12, B12, B#12, C13, C#13, D13, D#13, E13, E#13, F13, F#13, G13, G#13, A13, A#13, B13, B#13, C14, C#14, D14, D#14, E14, E#14, F14, F#14, G14, G#14, A14, A#14, B14, B#14, C15, C#15, D15, D#15, E15, E#15, F15, F#15, G15, G#15, A15, A#15, B15, B#15, C16, C#16, D16, D#16, E16, E#16, F16, F#16, G16, G#16, A16, A#16, B16, B#16, C17, C#17, D17, D#17, E17, E#17, F17, F#17, G17, G#17, A17, A#17, B17, B#17, C18, C#18, D18, D#18, E18, E#18, F18, F#18, G18, G#18, A18, A#18, B18, B#18, C19, C#19, D19, D#19, E19, E#19, F19, F#19, G19, G#19, A19, A#19, B19, B#19, C20, C#20, D20, D#20, E20, E#20, F20, F#20, G20, G#20, A20, A#20, B20, B#20, C21, C#21, D21, D#21, E21, E#21, F21, F#21, G21, G#21, A21, A#21, B21, B#21, C22, C#22, D22, D#22, E22, E#22, F22, F#22, G22, G#22, A22, A#22, B22, B#22, C23, C#23, D23, D#23, E23, E#23, F23, F#23, G23, G#23, A23, A#23, B23, B#23, C24, C#24, D24, D#24, E24, E#24, F24, F#24, G24, G#24, A24, A#24, B24, B#24, C25, C#25, D25, D#25, E25, E#25, F25, F#25, G25, G#25, A25, A#25, B25, B#25, C26, C#26, D26, D#26, E26, E#26, F26, F#26, G26, G#26, A26, A#26, B26, B#26, C27, C#27, D27, D#27, E27, E#27, F27, F#27, G27, G#27, A27, A#27, B27, B#27, C28, C#28, D28, D#28, E28, E#28, F28, F#28, G28, G#28, A28, A#28, B28, B#28, C29, C#29, D29, D#29, E29, E#29, F29, F#29, G29, G#29, A29, A#29, B29, B#29, C30, C#30, D30, D#30, E30, E#30, F30, F#30, G30, G#30, A30, A#30, B30, B#30, C31, C#31, D31, D#31, E31, E#31, F31, F#31, G31, G#31, A31, A#31, B31, B#31, C32, C#32, D32, D#32, E32, E#32, F32, F#32, G32, G#32, A32, A#32, B32, B#32, C33, C#33, D33, D#33, E33, E#33, F33, F#33, G33, G#33, A33, A#33, B33, B#33, C34, C#34, D34, D#34, E34, E#34, F34, F#34, G34, G#34, A34, A#34, B34, B#34, C35, C#35, D35, D#35, E35, E#35, F35, F#35, G35, G#35, A35, A#35, B35, B#35, C36, C#36, D36, D#36, E36, E#36, F36, F#36, G36, G#36, A36, A#36, B36, B#36, C37, C#37, D37, D#37, E37, E#37, F37, F#37, G37, G#37, A37, A#37, B37, B#37, C38, C#38, D38, D#38, E38, E#38, F38, F#38, G38, G#38, A38, A#38, B38, B#38, C39, C#39, D39, D#39, E39, E#39, F39, F#39, G39, G#39, A39, A#39, B39, B#39, C40, C#40, D40, D#40, E40, E#40, F40, F#40, G40, G#40, A40, A#40, B40, B#40, C41, C#41, D41, D#41, E41, E#41, F41, F#41, G41, G#41, A41, A#41, B41, B#41, C42, C#42, D42, D#42, E42, E#42, F42, F#42, G42, G#42, A42, A#42, B42, B#42, C43, C#43, D43, D#43, E43, E#43, F43, F#43, G43, G#43, A43, A#43, B43, B#43, C44, C#44, D44, D#44, E44, E#44, F44, F#44, G44, G#44, A44, A#44, B44, B#44, C45, C#45, D45, D#45, E45, E#45, F45, F#45, G45, G#45, A45, A#45, B45, B#45, C46, C#46, D46, D#46, E46, E#46, F46, F#46, G46, G#46, A46, A#46, B46, B#46, C47, C#47, D47, D#47, E47, E#47, F47, F#47, G47, G#47, A47, A#47, B47, B#47, C48, C#48, D48, D#48, E48, E#48, F48, F#48, G48, G#48, A48, A#48, B48, B#48, C49, C#49, D49, D#49, E49, E#49, F49, F#49, G49, G#49, A49, A#49, B49, B#49, C50, C#50, D50, D#50, E50, E#50, F50, F#50, G50, G#50, A50, A#50, B50, B#50, C51, C#51, D51, D#51, E51, E#51, F51, F#51, G51, G#51, A51, A#51, B51, B#51, C52, C#52, D52, D#52, E52, E#52, F52, F#52, G52, G#52, A52, A#52, B52, B#52, C53, C#53, D53, D#53, E53, E#53, F53, F#53, G53, G#53, A53, A#53, B53, B#53, C54, C#54, D54, D#54, E54, E#54, F54, F#54, G54, G#54, A54, A#54, B54, B#54, C55, C#55, D55, D#55, E55, E#55, F55, F#55, G55, G#55, A55, A#55, B55, B#55, C56, C#56, D56, D#56, E56, E#56, F56, F#56, G56, G#56, A56, A#56, B56, B#56, C57, C#57, D57, D#57, E57, E#57, F57, F#57, G57, G#57, A57, A#57, B57, B#57, C58, C#58, D58, D#58, E58, E#58, F58, F#58, G58, G#58, A58, A#58, B58, B#58, C59, C#59, D59, D#59, E59, E#59, F59, F#59, G59, G#59, A59, A#59, B59, B#59, C60, C#60, D60, D#60, E60, E#60, F60, F#60, G60, G#60, A60, A#60, B60, B#60, C61, C#61, D61, D#61, E61, E#61, F61, F#61, G61, G#61, A61, A#61, B61, B#61, C62, C#62, D62, D#62, E62, E#62, F62, F#62, G62, G#62, A62, A#62, B62, B#62, C63, C#63, D63, D#63, E63, E#63, F63, F#63, G63, G#63, A63, A#63, B63, B#63, C64, C#64, D64, D#64, E64, E#64, F64, F#64, G64, G#64, A64, A#64, B64, B#64, C65, C#65, D65, D#65, E65, E#65, F65, F#65, G65, G#65, A65, A#65, B65, B#65, C66, C#66, D66, D#66, E66, E#66, F66, F#66, G66, G#66, A66, A#66, B66, B#66, C67, C#67, D67, D#67, E67, E#67, F67, F#67, G67, G#67, A67, A#67, B67, B#67, C68, C#68, D68, D#68, E68, E#68, F68, F#68, G68, G#68, A68, A#68, B68, B#68, C69, C#69, D69, D#69, E69, E#69, F69, F#69, G69, G#69, A69, A#69, B69, B#69, C70, C#70, D70, D#70, E70, E#70, F70, F#70, G70, G#70, A70, A#70, B70, B#70, C71, C#71, D71, D#71, E71, E#71, F71, F#71, G71, G#71, A71, A#71, B71, B#71, C72, C#72, D72, D#72, E72, E#72, F72, F#72, G72, G#72, A72, A#72, B72, B#72, C73, C#73, D73, D#73, E73, E#73, F73, F#73, G73, G#73, A73, A#73, B73, B#73, C74, C#74, D74, D#74, E74, E#74, F74, F#74, G74, G#74, A74, A#74, B74, B#74, C75, C#75, D75, D#75, E75, E#75, F75, F#75, G75, G#75, A75, A#75, B75, B#75, C76, C#76, D76, D#76, E76, E#76, F76, F#76, G76, G#76, A76, A#76, B76, B#76, C77, C#77, D77, D#77, E77, E#77, F77, F#77, G77, G#77, A77, A#77, B77, B#77, C78, C#78, D78, D#78, E78, E#78, F78, F#78, G78, G#78, A78, A#78, B78, B#78, C79, C#79, D79, D#79, E79, E#79, F79, F#79, G79, G#79, A79, A#79, B79, B#79, C80, C#80, D80, D#80, E80, E#80, F80, F#80, G80, G#80, A80, A#80, B80, B#80, C81, C#81, D81, D#81, E81, E#81, F81, F#81, G81, G#81, A81, A#81, B81, B#81, C82, C#82, D82, D#82, E82, E#82, F82, F#82, G82, G#82, A82, A#82, B82, B#82, C83, C#83, D83, D#83, E83, E#83, F83, F#83, G83, G#83, A83, A#83, B83, B#83, C84, C#84, D84, D#84, E84, E#84, F84, F#84, G84, G#84, A84, A#84, B84, B#84, C85, C#85, D85, D#85, E85, E#85, F85, F#85, G85, G#85, A85, A#85, B85, B#85, C86, C#86, D86, D#86, E86, E#86, F86, F#86, G86, G#86, A86, A#86, B86, B#86, C87, C#87, D87, D#87, E87, E#87, F87, F#87, G87, G#87, A87, A#87, B87, B#87, C88, C#88, D88, D#88, E88, E#88, F88, F#88, G88, G#88, A88, A#88, B88, B#88, C89, C#89, D89, D#89, E89, E#89, F89, F#89, G89, G#89, A89, A#89, B89, B#89, C90, C#90, D90, D#90, E90, E#90, F90, F#90, G90, G#90, A90, A#90, B90, B#90, C91, C#91, D91, D#91, E91, E#91, F91, F#91, G91, G#91, A91, A#91, B91, B#91, C92, C#92, D92, D#92, E92, E#92, F92, F#92, G92, G#92, A92, A#92, B92, B#92, C93, C#93, D93, D#93, E93, E#93, F93, F#93, G93, G#93, A93, A#93, B93, B#93, C94, C#94, D94, D#94, E94, E#94, F94, F#94, G94, G#94, A94, A#94, B94, B#94, C95, C#95, D95, D#95, E95, E#95, F95, F#95, G95, G#95, A95, A#95, B95, B#95, C96, C#96, D96, D#96, E96, E#96, F96, F#96, G96, G#96, A96, A#96, B96, B#96, C97, C#97, D97, D#97, E97, E#97, F97, F#97, G97, G#97, A97, A#97, B97, B#97, C98, C#98, D98, D#98, E98, E#98, F98, F#98, G98, G#98, A98, A#98, B98, B#98, C99, C#99, D99, D#99, E99, E#99, F99, F#99, G99, G#99, A99, A#99, B99, B#99, C100, C#100, D100, D#100, E100, E#100, F100, F#100, G100, G#100, A100, A#100, B100, B#100, C101, C#101, D101, D#101, E101, E#101, F101, F#101, G101, G#101, A101, A#101, B101, B#101, C102, C#102, D102, D#102, E102, E#102, F102, F#102, G102, G#102, A102, A#102, B102, B#102, C103, C#103, D103, D#103, E103, E#103, F103, F#103, G103, G#103, A103, A#103, B103, B#103, C104, C#104, D104, D#104, E104, E#104, F104, F#104, G104, G#104, A104, A#104, B104, B#104, C105, C#105, D105, D#105, E105, E#105, F105, F#105, G105, G#105, A105, A#105, B105, B#105, C106, C#106, D106, D#106, E106, E#106, F106, F#106, G106, G#106, A106, A#106, B106, B#106, C107, C#107, D107, D#107, E107, E#107, F107, F#107, G107, G#107, A107, A#107, B107, B#107, C108, C#108, D108, D#108, E108, E#108, F108, F#108, G108, G#108, A108, A#108, B108, B#108, C109, C#109, D109, D#109, E109, E#109, F109, F#109, G109, G#109, A109, A#109, B109, B#109, C110, C#110, D110, D#110, E110, E#110, F110, F#110, G110, G#110, A110, A#110, B110, B#110, C111, C#111, D111, D#111, E111, E#111, F111, F#111, G111, G#111, A111, A#111, B111, B#111, C112, C#112, D112, D#112, E112, E#112, F112, F#112, G112, G#112, A112, A#112, B112, B#112, C113, C#113, D113, D#113, E113, E#113, F113, F#113, G113, G#113, A113, A#113, B113, B#113, C114, C#114, D114, D#114, E114, E#114, F114, F#114, G114, G#114, A114, A#114, B114, B#114, C115, C#115, D115, D#115, E115, E#115, F115, F#115, G115, G#115, A115, A#115, B115, B#115, C116, C#116, D116, D#116, E116, E#116, F116, F#116, G116, G#116, A116, A#116, B116, B#116, C117, C#117, D117, D#117, E117, E#117, F117, F#117, G117, G#117, A117, A#117, B117, B#117, C118, C#118, D118, D#118, E118, E#118, F118, F#118, G118, G#118, A118, A#118, B118, B#118, C119, C#119, D119, D#119, E119, E#119, F119, F#119, G119, G#119, A119, A#119, B119, B#119, C120, C#120, D120, D#120, E120, E#120, F120, F#120, G120, G#120, A120, A#120, B120, B#120, C121, C#121, D121, D#121, E121, E#121, F121, F#121, G121, G#121, A121, A#121, B121, B#121, C122, C#122, D122, D#122, E122, E#122, F122, F#122, G122, G#122, A122, A#122, B122, B#122, C123, C#123, D123, D#123, E123, E#123, F123, F#123, G123, G#123, A123, A#123, B123, B#123, C124, C#124, D124, D#124, E124, E#124, F124, F#124, G124, G#124, A124, A#124, B124, B#124, C125, C#125, D125, D#125, E125, E#125, F125, F#125, G125, G#125, A125, A#125, B125, B#125, C126, C#126, D126, D#126, E126, E#126, F126, F#126, G126, G#126, A126, A#126, B126, B#126, C127, C#127, D127, D#127, E127, E#127, F127, F#127, G127, G#127, A127, A#127, B127, B#127, C128, C#128, D128, D#128, E128, E#128, F128, F#128, G128, G#128, A128, A#128, B128, B#128, C129, C#129, D129, D#129, E129, E#129, F129, F#129, G129, G#129, A129, A#129, B129, B#129, C130, C#130, D130, D#130, E130, E#130, F130, F#130, G130, G#130, A130, A#130, B130, B#130, C131, C#131, D131, D#131, E131, E#131, F131, F#131, G131, G#131, A131, A#131, B131, B#131, C132, C#132, D132, D#132, E132, E#132, F132, F#132, G132, G#132, A132, A#132, B132, B#132, C133, C#133, D133, D#133, E133, E#133, F133, F#133, G133, G#133, A133, A#133, B133, B#133, C134, C#134, D134, D#134, E134, E#134, F134, F#134, G134, G#134, A134, A#134, B134, B#134, C135, C#135, D135, D#135, E135, E#135, F135, F#135, G135, G#135, A135, A#135, B135, B#135, C136, C#136, D136, D#136, E136, E#136, F136, F#136, G136, G#136, A136, A#136, B136, B#136, C137, C#137, D137, D#137, E137, E#137, F137, F#137, G137, G#137, A137, A#137, B137, B#137, C138, C#138, D138, D#138, E138, E#138, F138, F#138, G138, G#138, A138, A#138, B138, B#138, C139, C#139, D139, D#139, E139, E#139, F139, F#139, G139, G#139, A139, A#139, B139, B#139, C140, C#140, D140, D#140, E140, E#140, F140, F#140, G140, G#140, A140, A#140, B140, B#140, C141, C#141, D141, D#141, E141, E#141, F141, F#141, G141, G#141, A141, A#141, B141, B#141, C142, C#142, D142, D#142, E142, E#142, F142, F#142, G142, G#142, A142, A#142, B142, B#142, C143, C#143, D143, D#143, E143, E#143, F143, F#143, G143, G#143, A143, A#143, B143, B#143, C144, C#144, D144, D#144, E144, E#144, F144, F#144, G144, G#144, A144, A#144, B144, B#144, C145, C#145, D145, D#145, E145, E#145, F145, F#145, G145, G#145, A145, A#145, B145, B#145, C146, C#146, D146, D#146, E146, E#146, F146, F#146, G146, G#146, A146, A#146, B146, B#146, C147, C#147, D147, D#147, E147, E#147, F147, F#147, G147, G#147, A147, A#147, B147, B#147, C148, C#148, D148, D#148, E148, E#148, F148, F#148, G148, G#148, A148, A#148, B148, B#148, C149, C#149, D149, D#149, E149, E#149, F149, F#149, G149, G#149, A149, A#149, B149, B#149, C150, C#150, D150, D#150, E150, E#150, F150, F#150, G150, G#150, A150, A#150, B150, B#150, C151, C#151, D151, D#151, E151, E#151, F151, F#151, G151, G#151, A151, A#151, B151, B#151, C152, C#152, D152, D#152, E152, E#152, F152, F#152, G152, G#152, A152, A#152, B152, B#152, C153, C#153, D153, D#153, E153, E#153, F153, F#153, G153, G#153, A153, A#153, B153, B#153, C154, C#154, D154, D#154, E154, E#154, F154, F#154, G154, G#154, A154, A#154, B154, B#154, C155, C#155, D155, D#155, E155, E#155, F155, F#155, G155, G#155, A155, A#155, B155, B#155, C156, C#156, D156, D#156, E156, E#156, F156, F#156, G156, G#156, A156, A#156, B156, B#156, C157, C#157, D157, D#157, E157, E#157, F157, F#157, G157, G#157, A157, A#157, B157, B#157, C158, C#158, D158, D#158, E158, E#158, F158, F#158, G158, G#158, A158, A#158, B158, B#158, C159, C#159, D159, D#159, E159, E#159, F159, F#159, G159, G#159, A159, A#159, B159, B#159, C160, C#160, D160, D#160, E160, E#160, F160, F#160, G160, G#160, A160, A#160, B160, B#160, C161, C#161, D161, D#161, E161, E#161, F161, F#161, G161, G#161, A161, A#161, B161, B#161, C162, C#162, D162, D#162, E162, E#162, F162, F#162, G162, G#162, A162, A#162, B162, B#162, C163, C#163, D163, D#163, E163, E#163, F163, F#163, G163, G#163, A163, A#163, B163, B#163, C164, C#164, D164, D#164, E164, E#164, F164, F#164, G164, G#164, A164, A#164, B164, B#164, C165, C#165, D165, D#165, E165, E#165, F165, F#165, G165, G#165, A165, A#165, B165, B#165, C166, C#166, D166, D#166, E166, E#166, F166, F#166, G166, G#166, A166, A#166, B166, B#166, C167, C#167, D167, D#167, E167, E#167, F167, F#167, G167, G#167, A167, A#167, B167, B#167, C168, C#168, D168, D#168, E168, E#168, F168, F#168, G168, G#168, A168, A#168, B168, B#168, C169, C#169, D169, D#169, E169, E#169, F169, F#169, G169, G#169, A169, A#169, B169, B#169, C170, C#170, D170, D#170, E170, E#170, F170, F#170, G170, G#170, A170, A#170, B170, B#170, C171, C#171, D171, D#171, E171, E#171, F171, F#171, G171, G#171, A171, A#171, B171, B#171, C172, C#172, D172, D#172, E172, E#172, F172, F#172, G172, G#172, A172, A#172, B172, B#172, C173, C#173, D173, D#173, E173, E#173, F173, F#173, G173, G#173, A173, A#173, B173, B#173, C174, C#174, D174, D#174, E174, E#174, F174, F#174, G174, G#174, A174, A#174, B174, B#174, C175, C#175, D175, D#175, E175, E#175, F175, F#175, G175, G#175, A175, A#175, B175, B#175, C176, C#176, D176, D#176, E176, E#176, F176, F#176, G176, G#176, A176, A#176, B176, B#176, C177, C#177, D177, D#177, E177, E#177, F177, F#177, G177, G#177, A177, A#177, B177, B#177, C178, C#178, D178, D#178, E178, E#178, F178, F#178, G178, G#178, A178, A

Bassoon

Set 3

Concert  
G

Musical staff for Concert G, Set 3. The staff is in bass clef with a key signature of one sharp (F#). The melody consists of a series of eighth and sixteenth notes, ending with a quarter rest.

Concert  
B

Musical staff for Concert B, Set 3. The staff is in bass clef with a key signature of three sharps (F#, C#, G#). The melody consists of a series of eighth and sixteenth notes, ending with a quarter rest.

Concert  
F  
Chromatic

Musical staff for Concert F Chromatic, Set 3. The staff is in bass clef with a key signature of one sharp (F#). The melody consists of a series of eighth and sixteenth notes, ending with a quarter rest.

Musical staff for Concert F Chromatic, Set 3 (continued). The staff is in bass clef with a key signature of one sharp (F#). The melody consists of a series of eighth and sixteenth notes, ending with a quarter rest.

Set 4

Concert  
C

Musical staff for Concert C, Set 4. The staff is in bass clef with a key signature of one sharp (F#). The melody consists of a series of eighth and sixteenth notes, ending with a quarter rest.

Concert  
E

Musical staff for Concert E, Set 4. The staff is in bass clef with a key signature of three sharps (F#, C#, G#). The melody consists of a series of eighth and sixteenth notes, ending with a quarter rest.

Concert  
F  
Chromatic

Musical staff for Concert F Chromatic, Set 4. The staff is in bass clef with a key signature of one sharp (F#). The melody consists of a series of eighth and sixteenth notes, ending with a quarter rest.

Musical staff for Concert F Chromatic, Set 4 (continued). The staff is in bass clef with a key signature of one sharp (F#). The melody consists of a series of eighth and sixteenth notes, ending with a quarter rest.



# OkMEA Scale Sets

Clarinet in E $\flat$

## Set 1

Concert A



Clarinet in Eb  
Set 3

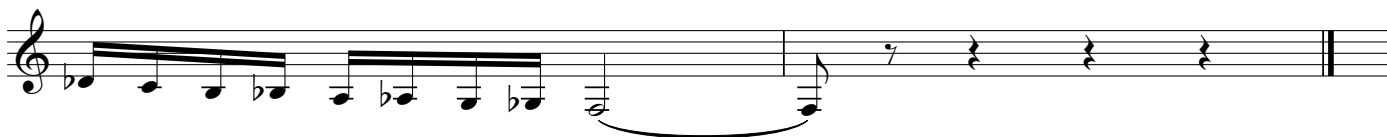
Concert  
G



Concert  
C



Concert  
Ab  
Chromatic



Set 4

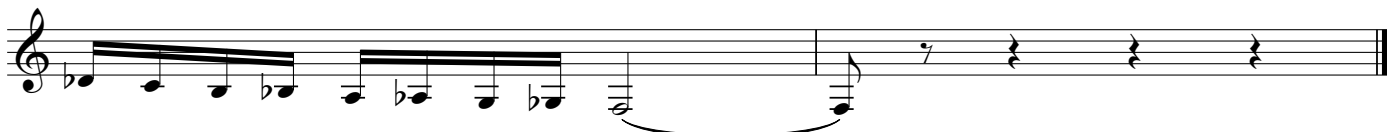
Concert  
C



Concert  
Fb



Concert  
Ab  
Chromatic



Clarinet in B $\flat$

# OkMEA Scale Sets

Set 1

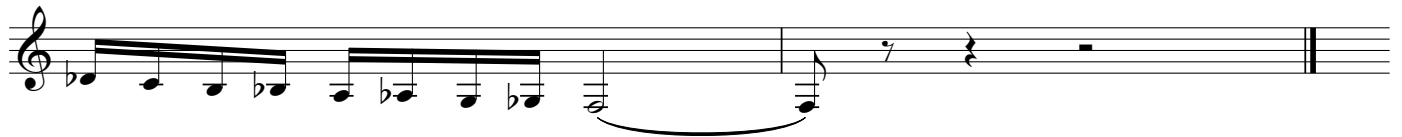
Concert  
A



Concert  
D $\flat$



Concert  
E $\flat$   
Chromatic



Set 2

Concert  
D



Concert  
G $\flat$



Concert  
E $\flat$   
Chromatic



Clarinet in Bb

Set 3

Concert G

Concert Cb

Concert Eb Chromatic

Set 4

Concert C

Concert E

Concert Eb Chromatic

Bass Clarinet in B $\flat$

# OkMEA Scale Sets

## Set 1

Concert  
A



Concert  
Db



Concert  
Eb  
Chromatic



## Set 2

Concert  
D



Concert  
Gb



Concert  
Eb  
Chromatic



Bass Clarinet in B $\flat$

Set 3

Concert G

Musical staff for Concert G, Set 3. The staff is in treble clef with a key signature of two sharps (F# and C#). The melody consists of a sequence of eighth and quarter notes, ending with a quarter rest.

Concert C $\flat$

Musical staff for Concert C $\flat$ , Set 3. The staff is in treble clef with a key signature of three flats (B $\flat$ , E $\flat$ , and A $\flat$ ). The melody consists of a sequence of eighth and quarter notes, ending with a quarter rest.

Concert E $\flat$  Chromatic

Musical staff for Concert E $\flat$  Chromatic, Set 3. The staff is in treble clef with a key signature of three flats. The melody is a chromatic scale consisting of eighth notes, ending with a quarter rest.

Musical staff for Concert E $\flat$  Chromatic, Set 3 (continued). The staff is in treble clef with a key signature of three flats. The melody is a chromatic scale consisting of eighth notes, ending with a quarter rest.

Set 4

Concert C

Musical staff for Concert C, Set 4. The staff is in treble clef with a key signature of two sharps (F# and C#). The melody consists of a sequence of eighth and quarter notes, ending with a quarter rest.

Concert E

Musical staff for Concert E, Set 4. The staff is in treble clef with a key signature of four sharps (F#, C#, G#, and D#). The melody consists of a sequence of eighth and quarter notes, ending with a quarter rest.

Concert E $\flat$  Chromatic

Musical staff for Concert E $\flat$  Chromatic, Set 4. The staff is in treble clef with a key signature of three flats. The melody is a chromatic scale consisting of eighth notes, ending with a quarter rest.

Musical staff for Concert E $\flat$  Chromatic, Set 4 (continued). The staff is in treble clef with a key signature of three flats. The melody is a chromatic scale consisting of eighth notes, ending with a quarter rest.

Contra Alto Clarinet in E $\flat$

# OkMEA Scale Sets

## Set 1

Concert  
A



Musical staff for Concert A, Set 1. The key signature has four sharps (F#, C#, G#, D#). The scale is written in a single line of music, starting on a middle C (C4) and ascending to a G5, then descending back to C4. The notes are: C4, C#4, D4, D#4, E4, E#4, F4, F#4, G4, G#4, A4, A#4, B4, B#4, C5, C#5, D5, D#5, E5, E#5, F5, F#5, G5, G#5, A5, A#5, B5, B#5, C6, C#6, D6, D#6, E6, E#6, F6, F#6, G6, G#6, A6, A#6, B6, B#6, C7, C#7, D7, D#7, E7, E#7, F7, F#7, G7, G#7, A7, A#7, B7, B#7, C8, C#8, D8, D#8, E8, E#8, F8, F#8, G8, G#8, A8, A#8, B8, B#8, C9, C#9, D9, D#9, E9, E#9, F9, F#9, G9, G#9, A9, A#9, B9, B#9, C10, C#10, D10, D#10, E10, E#10, F10, F#10, G10, G#10, A10, A#10, B10, B#10, C11, C#11, D11, D#11, E11, E#11, F11, F#11, G11, G#11, A11, A#11, B11, B#11, C12, C#12, D12, D#12, E12, E#12, F12, F#12, G12, G#12, A12, A#12, B12, B#12, C13, C#13, D13, D#13, E13, E#13, F13, F#13, G13, G#13, A13, A#13, B13, B#13, C14, C#14, D14, D#14, E14, E#14, F14, F#14, G14, G#14, A14, A#14, B14, B#14, C15, C#15, D15, D#15, E15, E#15, F15, F#15, G15, G#15, A15, A#15, B15, B#15, C16, C#16, D16, D#16, E16, E#16, F16, F#16, G16, G#16, A16, A#16, B16, B#16, C17, C#17, D17, D#17, E17, E#17, F17, F#17, G17, G#17, A17, A#17, B17, B#17, C18, C#18, D18, D#18, E18, E#18, F18, F#18, G18, G#18, A18, A#18, B18, B#18, C19, C#19, D19, D#19, E19, E#19, F19, F#19, G19, G#19, A19, A#19, B19, B#19, C20, C#20, D20, D#20, E20, E#20, F20, F#20, G20, G#20, A20, A#20, B20, B#20, C21, C#21, D21, D#21, E21, E#21, F21, F#21, G21, G#21, A21, A#21, B21, B#21, C22, C#22, D22, D#22, E22, E#22, F22, F#22, G22, G#22, A22, A#22, B22, B#22, C23, C#23, D23, D#23, E23, E#23, F23, F#23, G23, G#23, A23, A#23, B23, B#23, C24, C#24, D24, D#24, E24, E#24, F24, F#24, G24, G#24, A24, A#24, B24, B#24, C25, C#25, D25, D#25, E25, E#25, F25, F#25, G25, G#25, A25, A#25, B25, B#25, C26, C#26, D26, D#26, E26, E#26, F26, F#26, G26, G#26, A26, A#26, B26, B#26, C27, C#27, D27, D#27, E27, E#27, F27, F#27, G27, G#27, A27, A#27, B27, B#27, C28, C#28, D28, D#28, E28, E#28, F28, F#28, G28, G#28, A28, A#28, B28, B#28, C29, C#29, D29, D#29, E29, E#29, F29, F#29, G29, G#29, A29, A#29, B29, B#29, C30, C#30, D30, D#30, E30, E#30, F30, F#30, G30, G#30, A30, A#30, B30, B#30, C31, C#31, D31, D#31, E31, E#31, F31, F#31, G31, G#31, A31, A#31, B31, B#31, C32, C#32, D32, D#32, E32, E#32, F32, F#32, G32, G#32, A32, A#32, B32, B#32, C33, C#33, D33, D#33, E33, E#33, F33, F#33, G33, G#33, A33, A#33, B33, B#33, C34, C#34, D34, D#34, E34, E#34, F34, F#34, G34, G#34, A34, A#34, B34, B#34, C35, C#35, D35, D#35, E35, E#35, F35, F#35, G35, G#35, A35, A#35, B35, B#35, C36, C#36, D36, D#36, E36, E#36, F36, F#36, G36, G#36, A36, A#36, B36, B#36, C37, C#37, D37, D#37, E37, E#37, F37, F#37, G37, G#37, A37, A#37, B37, B#37, C38, C#38, D38, D#38, E38, E#38, F38, F#38, G38, G#38, A38, A#38, B38, B#38, C39, C#39, D39, D#39, E39, E#39, F39, F#39, G39, G#39, A39, A#39, B39, B#39, C40, C#40, D40, D#40, E40, E#40, F40, F#40, G40, G#40, A40, A#40, B40, B#40, C41, C#41, D41, D#41, E41, E#41, F41, F#41, G41, G#41, A41, A#41, B41, B#41, C42, C#42, D42, D#42, E42, E#42, F42, F#42, G42, G#42, A42, A#42, B42, B#42, C43, C#43, D43, D#43, E43, E#43, F43, F#43, G43, G#43, A43, A#43, B43, B#43, C44, C#44, D44, D#44, E44, E#44, F44, F#44, G44, G#44, A44, A#44, B44, B#44, C45, C#45, D45, D#45, E45, E#45, F45, F#45, G45, G#45, A45, A#45, B45, B#45, C46, C#46, D46, D#46, E46, E#46, F46, F#46, G46, G#46, A46, A#46, B46, B#46, C47, C#47, D47, D#47, E47, E#47, F47, F#47, G47, G#47, A47, A#47, B47, B#47, C48, C#48, D48, D#48, E48, E#48, F48, F#48, G48, G#48, A48, A#48, B48, B#48, C49, C#49, D49, D#49, E49, E#49, F49, F#49, G49, G#49, A49, A#49, B49, B#49, C50, C#50, D50, D#50, E50, E#50, F50, F#50, G50, G#50, A50, A#50, B50, B#50, C51, C#51, D51, D#51, E51, E#51, F51, F#51, G51, G#51, A51, A#51, B51, B#51, C52, C#52, D52, D#52, E52, E#52, F52, F#52, G52, G#52, A52, A#52, B52, B#52, C53, C#53, D53, D#53, E53, E#53, F53, F#53, G53, G#53, A53, A#53, B53, B#53, C54, C#54, D54, D#54, E54, E#54, F54, F#54, G54, G#54, A54, A#54, B54, B#54, C55, C#55, D55, D#55, E55, E#55, F55, F#55, G55, G#55, A55, A#55, B55, B#55, C56, C#56, D56, D#56, E56, E#56, F56, F#56, G56, G#56, A56, A#56, B56, B#56, C57, C#57, D57, D#57, E57, E#57, F57, F#57, G57, G#57, A57, A#57, B57, B#57, C58, C#58, D58, D#58, E58, E#58, F58, F#58, G58, G#58, A58, A#58, B58, B#58, C59, C#59, D59, D#59, E59, E#59, F59, F#59, G59, G#59, A59, A#59, B59, B#59, C60, C#60, D60, D#60, E60, E#60, F60, F#60, G60, G#60, A60, A#60, B60, B#60, C61, C#61, D61, D#61, E61, E#61, F61, F#61, G61, G#61, A61, A#61, B61, B#61, C62, C#62, D62, D#62, E62, E#62, F62, F#62, G62, G#62, A62, A#62, B62, B#62, C63, C#63, D63, D#63, E63, E#63, F63, F#63, G63, G#63, A63, A#63, B63, B#63, C64, C#64, D64, D#64, E64, E#64, F64, F#64, G64, G#64, A64, A#64, B64, B#64, C65, C#65, D65, D#65, E65, E#65, F65, F#65, G65, G#65, A65, A#65, B65, B#65, C66, C#66, D66, D#66, E66, E#66, F66, F#66, G66, G#66, A66, A#66, B66, B#66, C67, C#67, D67, D#67, E67, E#67, F67, F#67, G67, G#67, A67, A#67, B67, B#67, C68, C#68, D68, D#68, E68, E#68, F68, F#68, G68, G#68, A68, A#68, B68, B#68, C69, C#69, D69, D#69, E69, E#69, F69, F#69, G69, G#69, A69, A#69, B69, B#69, C70, C#70, D70, D#70, E70, E#70, F70, F#70, G70, G#70, A70, A#70, B70, B#70, C71, C#71, D71, D#71, E71, E#71, F71, F#71, G71, G#71, A71, A#71, B71, B#71, C72, C#72, D72, D#72, E72, E#72, F72, F#72, G72, G#72, A72, A#72, B72, B#72, C73, C#73, D73, D#73, E73, E#73, F73, F#73, G73, G#73, A73, A#73, B73, B#73, C74, C#74, D74, D#74, E74, E#74, F74, F#74, G74, G#74, A74, A#74, B74, B#74, C75, C#75, D75, D#75, E75, E#75, F75, F#75, G75, G#75, A75, A#75, B75, B#75, C76, C#76, D76, D#76, E76, E#76, F76, F#76, G76, G#76, A76, A#76, B76, B#76, C77, C#77, D77, D#77, E77, E#77, F77, F#77, G77, G#77, A77, A#77, B77, B#77, C78, C#78, D78, D#78, E78, E#78, F78, F#78, G78, G#78, A78, A#78, B78, B#78, C79, C#79, D79, D#79, E79, E#79, F79, F#79, G79, G#79, A79, A#79, B79, B#79, C80, C#80, D80, D#80, E80, E#80, F80, F#80, G80, G#80, A80, A#80, B80, B#80, C81, C#81, D81, D#81, E81, E#81, F81, F#81, G81, G#81, A81, A#81, B81, B#81, C82, C#82, D82, D#82, E82, E#82, F82, F#82, G82, G#82, A82, A#82, B82, B#82, C83, C#83, D83, D#83, E83, E#83, F83, F#83, G83, G#83, A83, A#83, B83, B#83, C84, C#84, D84, D#84, E84, E#84, F84, F#84, G84, G#84, A84, A#84, B84, B#84, C85, C#85, D85, D#85, E85, E#85, F85, F#85, G85, G#85, A85, A#85, B85, B#85, C86, C#86, D86, D#86, E86, E#86, F86, F#86, G86, G#86, A86, A#86, B86, B#86, C87, C#87, D87, D#87, E87, E#87, F87, F#87, G87, G#87, A87, A#87, B87, B#87, C88, C#88, D88, D#88, E88, E#88, F88, F#88, G88, G#88, A88, A#88, B88, B#88, C89, C#89, D89, D#89, E89, E#89, F89, F#89, G89, G#89, A89, A#89, B89, B#89, C90, C#90, D90, D#90, E90, E#90, F90, F#90, G90, G#90, A90, A#90, B90, B#90, C91, C#91, D91, D#91, E91, E#91, F91, F#91, G91, G#91, A91, A#91, B91, B#91, C92, C#92, D92, D#92, E92, E#92, F92, F#92, G92, G#92, A92, A#92, B92, B#92, C93, C#93, D93, D#93, E93, E#93, F93, F#93, G93, G#93, A93, A#93, B93, B#93, C94, C#94, D94, D#94, E94, E#94, F94, F#94, G94, G#94, A94, A#94, B94, B#94, C95, C#95, D95, D#95, E95, E#95, F95, F#95, G95, G#95, A95, A#95, B95, B#95, C96, C#96, D96, D#96, E96, E#96, F96, F#96, G96, G#96, A96, A#96, B96, B#96, C97, C#97, D97, D#97, E97, E#97, F97, F#97, G97, G#97, A97, A#97, B97, B#97, C98, C#98, D98, D#98, E98, E#98, F98, F#98, G98, G#98, A98, A#98, B98, B#98, C99, C#99, D99, D#99, E99, E#99, F99, F#99, G99, G#99, A99, A#99, B99, B#99, C100, C#100, D100, D#100, E100, E#100, F100, F#100, G100, G#100, A100, A#100, B100, B#100, C101, C#101, D101, D#101, E101, E#101, F101, F#101, G101, G#101, A101, A#101, B101, B#101, C102, C#102, D102, D#102, E102, E#102, F102, F#102, G102, G#102, A102, A#102, B102, B#102, C103, C#103, D103, D#103, E103, E#103, F103, F#103, G103, G#103, A103, A#103, B103, B#103, C104, C#104, D104, D#104, E104, E#104, F104, F#104, G104, G#104, A104, A#104, B104, B#104, C105, C#105, D105, D#105, E105, E#105, F105, F#105, G105, G#105, A105, A#105, B105, B#105, C106, C#106, D106, D#106, E106, E#106, F106, F#106, G106, G#106, A106, A#106, B106, B#106, C107, C#107, D107, D#107, E107, E#107, F107, F#107, G107, G#107, A107, A#107, B107, B#107, C108, C#108, D108, D#108, E108, E#108, F108, F#108, G108, G#108, A108, A#108, B108, B#108, C109, C#109, D109, D#109, E109, E#109, F109, F#109, G109, G#109, A109, A#109, B109, B#109, C110, C#110, D110, D#110, E110, E#110, F110, F#110, G110, G#110, A110, A#110, B110, B#110, C111, C#111, D111, D#111, E111, E#111, F111, F#111, G111, G#111, A111, A#111, B111, B#111, C112, C#112, D112, D#112, E112, E#112, F112, F#112, G112, G#112, A112, A#112, B112, B#112, C113, C#113, D113, D#113, E113, E#113, F113, F#113, G113, G#113, A113, A#113, B113, B#113, C114, C#114, D114, D#114, E114, E#114, F114, F#114, G114, G#114, A114, A#114, B114, B#114, C115, C#115, D115, D#115, E115, E#115, F115, F#115, G115, G#115, A115, A#115, B115, B#115, C116, C#116, D116, D#116, E116, E#116, F116, F#116, G116, G#116, A116, A#116, B116, B#116, C117, C#117, D117, D#117, E117, E#117, F117, F#117, G117, G#117, A117, A#117, B117, B#117, C118, C#118, D118, D#118, E118, E#118, F118, F#118, G118, G#118, A118, A#118, B118, B#118, C119, C#119, D119, D#119, E119, E#119, F119, F#119, G119, G#119, A119, A#119, B119, B#119, C120, C#120, D120, D#120, E120, E#120, F120, F#120, G120, G#120, A120, A#120, B120, B#120, C121, C#121, D121, D#121, E121, E#121, F121, F#121, G121, G#121, A121, A#121, B121, B#121, C122, C#122, D122, D#122, E122, E#122, F122, F#122, G122, G#122, A122, A#122, B122, B#122, C123, C#123, D123, D#123, E123, E#123, F123, F#123, G123, G#123, A123, A#123, B123, B#123, C124, C#124, D124, D#124, E124, E#124, F124, F#124, G124, G#124, A124, A#124, B124, B#124, C125, C#125, D125, D#125, E125, E#125, F125, F#125, G125, G#125, A125, A#125, B125, B#125, C126, C#126, D126, D#126, E126, E#126, F126, F#126, G126, G#126, A126, A#126, B126, B#126, C127, C#127, D127, D#127, E127, E#127, F127, F#127, G127, G#127, A127, A#127, B127, B#127, C128, C#128, D128, D#128, E128, E#128, F128, F#128, G128, G#128, A128, A#128, B128, B#128, C129, C#129, D129, D#129, E129, E#129, F129, F#129, G129, G#129, A129, A#129, B129, B#129, C130, C#130, D130, D#130, E130, E#130, F130, F#130, G130, G#130, A130, A#130, B130, B#130, C131, C#131, D131, D#131, E131, E#131, F131, F#131, G131, G#131, A131, A#131, B131, B#131, C132, C#132, D132, D#132, E132, E#132, F132, F#132, G132, G#132, A132, A#132, B132, B#132, C133, C#133, D133, D#133, E133, E#133, F133, F#133, G133, G#133, A133, A#133, B133, B#133, C134, C#134, D134, D#134, E134, E#134, F134, F#134, G134, G#134, A134, A#134, B134, B#134, C135, C#135, D135, D#135, E135, E#135, F135, F#135, G135, G#135, A135, A#135, B135, B#135, C136, C#136, D136, D#136, E136, E#136, F136, F#136, G136, G#136, A136, A#136, B136, B#136, C137, C#137, D137, D#137, E137, E#137, F137, F#137, G137, G#137, A137, A#137, B137, B#137, C138, C#138, D138, D#138, E138, E#138, F138, F#138, G138, G#138, A138, A#138, B138, B#138, C139, C#139, D139, D#139, E139, E#139, F139, F#139, G139, G#139, A139, A#139, B139, B#139, C140, C#140, D140, D#140, E140, E#140, F140, F#140, G140, G#140, A140, A#140, B140, B#140, C141, C#141, D141, D#141, E141, E#141, F141, F#141, G141, G#141, A141, A#141, B141, B#141, C142, C#142, D142, D#142, E142, E#142, F142, F#142, G142, G#142, A142, A#142, B142, B#142, C143, C#143, D143, D#143, E143, E#143, F143, F#143, G143, G#143, A143, A#143, B143, B#143, C144, C#144, D144, D#144, E144, E#144, F144, F#144, G144, G#144, A144, A#144, B144, B#144, C145, C#145, D145, D#145, E145, E#145, F145, F#145, G145, G#145, A145, A#145, B145, B#145, C146, C#146, D146, D#146, E146, E#146, F146, F#146, G146, G#146, A146, A#146, B146, B#146, C147, C#147, D147, D#147, E147, E#147, F147, F#147, G147, G#147, A147, A#147, B147, B#147, C148, C#148, D148, D#148, E148, E#148, F148, F#148, G148, G#148, A148, A#148, B148, B#148, C149, C#149, D149, D#149, E149, E#149, F149, F#149, G149, G#149, A149, A#149, B149, B#149, C150, C#150, D150, D#150, E150, E#150, F150, F#150, G150, G#150, A150, A#150, B150, B#150, C151, C#151, D151, D#151, E151, E#151, F151, F#151, G151, G#151, A151, A#151, B151, B#151, C152, C#152, D152, D#152, E152, E#152, F152, F#152, G152, G#152, A152, A#152, B152, B#152, C153, C#153, D153, D#153, E153, E#153, F153, F#153, G153, G#153, A153, A#153, B153, B#153, C154, C#154, D154, D#154, E154, E#154, F154, F#154, G154, G#154, A154, A#154, B154, B#154, C155, C#155, D155, D#155, E155, E#155, F155, F#155, G155, G#155, A155, A#155, B155, B#155, C156, C#156, D156, D#156, E156, E#156, F156, F#156, G156, G#156, A156, A#156, B156, B#156, C157, C#157, D157, D#157, E157, E#157, F157, F#157, G157, G#157, A157, A#157, B157, B#157, C158, C#158, D158, D#158, E158, E#158, F158, F#158, G158, G#158, A158, A#158, B158, B#158, C159, C#159, D159, D#159, E159, E#159, F159, F#159, G159, G#159, A159, A#159, B159, B#159, C160, C#160, D160, D#160, E160, E#160, F160, F#160, G160, G#160, A160, A#160, B160, B#160, C161, C#161, D161, D#161, E161, E#161, F161, F#161, G161, G#161, A161, A#161, B161, B#161, C162, C#162, D162, D#162, E162, E#162, F162, F#162, G162, G#162, A162, A#162, B162, B#162, C163, C#163, D163, D#163, E163, E#163, F163, F#163, G163, G#163, A163, A#163, B163, B#163, C164, C#164, D164, D#164, E164, E#164, F164, F#164, G164, G#164, A164, A#164, B164, B#164, C165, C#165, D165, D#165, E165, E#165, F165, F#165, G165, G#165, A165, A#165, B165, B#165, C166, C#166, D166, D#166, E166, E#166, F166, F#166, G166, G#166, A166, A#166, B166, B#166, C167, C#167, D167, D#167, E167, E#167, F167, F#167, G167, G#167, A167, A#167, B167, B#167, C168, C#168, D168, D#168, E168, E#168, F168, F#168, G168, G#168, A168, A#168, B168, B#168, C169, C#169, D169, D#169, E169, E#169, F169, F#169, G169, G#169, A169, A#169, B169, B#169, C170, C#170, D170, D#170, E170, E#170, F170, F#170, G170, G#170, A170, A#170, B170, B#170, C171, C#171, D171, D#171, E171, E#171, F171, F#171, G171, G#171, A171, A#171, B171, B#171, C172, C#172, D172, D#172, E172, E#172, F172, F#172, G172, G#172, A172, A#172, B172, B#172, C173, C#173, D173, D#173, E173, E#173, F173, F#173, G173, G#173, A173, A#173, B173, B#173, C174, C#174, D174, D#174, E174, E#174, F174, F#174, G174, G#174, A174, A#174, B174, B#174, C175, C#175, D175, D#175, E175, E#175, F175, F#175, G175, G#175, A175, A#175, B175, B#175, C176, C#176, D176, D#176, E176, E#176, F176, F#176, G176, G#176, A176, A#176, B176, B#176, C177, C#177, D177, D#177, E177, E#177, F177, F#177, G177, G#177, A177, A#177, B177, B#177, C178, C#178, D178, D#178, E178, E#178, F178, F#178, G178, G#178, A178, A#178, B178, B#178, C179, C#179, D179, D#179, E179, E#179, F179, F#17

Contra Alto Clarinet in E $\flat$

Set 3

Concert G

Concert C $\flat$

Concert A $\flat$   
Chromatic

Set 4

Concert C

Concert F

Concert A $\flat$   
Chromatic





Contrabass Clarinet in B $\flat$

Set 3

Concert G



Musical staff for Concert G, Set 3. The staff is in treble clef with a key signature of two sharps (F# and C#). The melody consists of eighth and quarter notes, ending with a quarter rest.

Concert C $\flat$



Musical staff for Concert C $\flat$ , Set 3. The staff is in treble clef with a key signature of three flats (B $\flat$ , E $\flat$ , and A $\flat$ ). The melody consists of eighth and quarter notes, ending with a quarter rest.

Concert E $\flat$  Chromatic



Musical staff for Concert E $\flat$  Chromatic, Set 3. The staff is in treble clef with a key signature of three flats. The melody is a chromatic scale consisting of eighth notes, ending with a quarter rest.



Musical staff for Concert E $\flat$  Chromatic, Set 3. The staff is in treble clef with a key signature of three flats. The melody is a chromatic scale consisting of eighth notes, ending with a quarter rest.

Set 4

Concert C



Musical staff for Concert C, Set 4. The staff is in treble clef with a key signature of one sharp (F#). The melody consists of eighth and quarter notes, ending with a quarter rest.

Concert E



Musical staff for Concert E, Set 4. The staff is in treble clef with a key signature of four sharps (F#, C#, G#, and D#). The melody consists of eighth and quarter notes, ending with a quarter rest.

Concert E $\flat$  Chromatic



Musical staff for Concert E $\flat$  Chromatic, Set 4. The staff is in treble clef with a key signature of three flats. The melody is a chromatic scale consisting of eighth notes, ending with a quarter rest.



Musical staff for Concert E $\flat$  Chromatic, Set 4. The staff is in treble clef with a key signature of three flats. The melody is a chromatic scale consisting of eighth notes, ending with a quarter rest.

Alto Saxophone

# OkMEA Scale Sets

## Set 1

Concert  
A



Concert  
Db



Concert  
Eb  
Chromatic



## Set 2

Concert  
D



Concert  
Gb



Concert  
Eb  
Chromatic



Alto Saxophone

Set 3

Concert G

A musical staff in treble clef with a key signature of three sharps (F#, C#, G#). The melody consists of eighth and quarter notes, ending with a quarter rest.

Concert Cb

A musical staff in treble clef with a key signature of three flats (Bb, Eb, Ab). The melody consists of eighth and quarter notes, ending with a quarter rest.

Concert Eb Chromatic

A musical staff in treble clef with a key signature of three flats (Bb, Eb, Ab). The melody is a chromatic scale consisting of eighth notes, ending with a quarter rest.

A musical staff in treble clef with a key signature of three flats (Bb, Eb, Ab). The melody is a chromatic scale consisting of eighth notes, ending with a quarter rest.

Set 4

Concert C

A musical staff in treble clef with a key signature of one sharp (F#). The melody consists of eighth and quarter notes, ending with a quarter rest.

Concert Fb

A musical staff in treble clef with a key signature of four flats (Bbb, Ebb, Abb, Dbb). The melody consists of eighth and quarter notes, ending with a quarter rest.

Concert Eb Chromatic

A musical staff in treble clef with a key signature of three flats (Bb, Eb, Ab). The melody is a chromatic scale consisting of eighth notes, ending with a quarter rest.

A musical staff in treble clef with a key signature of three flats (Bb, Eb, Ab). The melody is a chromatic scale consisting of eighth notes, ending with a quarter rest.

Tenor Saxophone

# OkMEA Scale Sets

## Set 1

Concert A

Concert Db

Concert Bb Chromatic

## Set 2

Concert D

Concert Gb

Concert Bb Chromatic

Tenor Saxophone

Set 3

Concert G

A musical staff in treble clef with a key signature of one sharp (F#). The melody consists of a series of eighth and quarter notes, ending with a quarter rest.

Concert Cb

A musical staff in treble clef with a key signature of three flats (Bb, Eb, Ab). The melody consists of a series of eighth and quarter notes, ending with a quarter rest.

Concert Bb Chromatic

A musical staff in treble clef with a key signature of two flats (Bb, Eb). The melody is a chromatic scale consisting of eighth notes, ending with a quarter rest.

A musical staff in treble clef with a key signature of two flats (Bb, Eb). The melody is a chromatic scale consisting of eighth notes, ending with a quarter rest.

Set 4

Concert C

A musical staff in treble clef with a key signature of one sharp (F#). The melody consists of a series of eighth and quarter notes, ending with a quarter rest.

Concert E

A musical staff in treble clef with a key signature of four sharps (F#, C#, G#, D#). The melody consists of a series of eighth and quarter notes, ending with a quarter rest.

Concert Bb Chromatic

A musical staff in treble clef with a key signature of two flats (Bb, Eb). The melody is a chromatic scale consisting of eighth notes, ending with a quarter rest.

A musical staff in treble clef with a key signature of two flats (Bb, Eb). The melody is a chromatic scale consisting of eighth notes, ending with a quarter rest.



Baritone Saxophone

Set 3

Concert  
G

Musical staff for Concert G, showing a melodic line in treble clef with a key signature of three sharps (F#, C#, G#).

Concert  
Cb

Musical staff for Concert Cb, showing a melodic line in treble clef with a key signature of three flats (Bb, Fb, Cb).

Concert  
Eb  
Chromatic

Musical staff for Concert Eb Chromatic, showing a chromatic scale in treble clef with a key signature of one flat (Bb).

Musical staff for Concert Eb Chromatic continuation, showing a chromatic scale in treble clef with a key signature of one flat (Bb).

Set 4

Concert  
C

Musical staff for Concert C, showing a melodic line in treble clef with a key signature of no sharps or flats (C).

Concert  
Fb

Musical staff for Concert Fb, showing a melodic line in treble clef with a key signature of five flats (Bbb, Fbb, Cbb, Gbb, Dbb).

Concert  
Eb  
Chromatic

Musical staff for Concert Eb Chromatic, showing a chromatic scale in treble clef with a key signature of one flat (Bb).

Musical staff for Concert Eb Chromatic continuation, showing a chromatic scale in treble clef with a key signature of one flat (Bb).



Trumpet in B $\flat$

# OkMEA Scale Sets

## Set 1

Concert A

Concert D $\flat$

Concert B $\flat$  Chromatic

## Set 2

Concert D

Concert G $\flat$

Concert B $\flat$  Chromatic

Trumpet in Bb

Set 3

Concert  
G

Musical staff for Concert G, showing a melodic line in G major with a treble clef and a key signature of two sharps (F# and C#).

Concert  
Cb

Musical staff for Concert Cb, showing a melodic line in C minor with a treble clef and a key signature of three flats (Bb, Eb, and Ab).

Concert  
Bb  
Chromatic

Musical staff for Concert Bb Chromatic, showing a chromatic scale in Bb major with a treble clef and a key signature of two flats (Bb and Eb).

Musical staff for Concert Bb Chromatic continuation, showing the final notes of the chromatic scale in Bb major.

Set 4

Concert  
C

Musical staff for Concert C, showing a melodic line in C major with a treble clef and a key signature of no sharps or flats.

Concert  
E

Musical staff for Concert E, showing a melodic line in E major with a treble clef and a key signature of three sharps (F#, C#, and G#).

Concert  
Bb  
Chromatic

Musical staff for Concert Bb Chromatic, showing a chromatic scale in Bb major with a treble clef and a key signature of two flats (Bb and Eb).

Musical staff for Concert Bb Chromatic continuation, showing the final notes of the chromatic scale in Bb major.

# OkMEA Scale Sets

Horn in F

## Set 1

Concert  
A

Musical notation for Set 1, Concert A. The scale is written in treble clef with a key signature of three sharps (F#, C#, G#). The notes are: A2, A2, B2, C3, C3, D3, D3, E3, E3, F3, F3, G3, G3, A3, A3, B3, B3, C4, C4, B3, A3, G3, F3, E3, D3, C3, B2, A2.

Concert  
Db

Musical notation for Set 1, Concert Db. The scale is written in treble clef with a key signature of two flats (Bb, Eb). The notes are: Bb2, Bb2, C3, C3, D3, D3, Eb3, Eb3, E3, E3, F3, F3, G3, G3, Ab3, Ab3, A3, A3, Bb3, Bb3, Ab3, G3, F3, Eb3, D3, C3, Bb2, Bb2.

Concert  
Bb  
Chromatic

Musical notation for Set 1, Concert Bb Chromatic. The scale is written in treble clef with a key signature of two flats (Bb, Eb). The notes are: Bb2, Bb2, C3, C#3, C#3, C3, C3, D3, D#3, D#3, D3, D3, Eb3, Eb3, E3, E#3, E#3, E3, E3, F3, F#3, F#3, F3, F3, G3, G#3, G#3, G3, G3, Ab3, Ab3, A3, A#3, A#3, A3, A3, Bb3, Bb3, Bb3, Bb3, C4, C4, Bb3, Ab3, G3, F3, Eb3, D3, C3, Bb2, Bb2.

Musical notation for Set 1, Concert Bb Chromatic (continued). The scale is written in treble clef with a key signature of two flats (Bb, Eb). The notes are: Bb2, Bb2, C3, C#3, C#3, C3, C3, D3, D#3, D#3, D3, D3, Eb3, Eb3, E3, E#3, E#3, E3, E3, F3, F#3, F#3, F3, F3, G3, G#3, G#3, G3, G3, Ab3, Ab3, A3, A#3, A#3, A3, A3, Bb3, Bb3, Bb3, Bb3, C4, C4, Bb3, Ab3, G3, F3, Eb3, D3, C3, Bb2, Bb2.

## Set 2

Concert  
D

Musical notation for Set 2, Concert D. The scale is written in treble clef with a key signature of two sharps (F#, C#). The notes are: D2, D2, E2, E2, F#2, F#2, G2, G2, A2, A2, B2, B2, C#3, C#3, D3, D3, E3, E3, F#3, F#3, G3, G3, A3, A3, B3, B3, C#4, C#4, D4, D4, C#4, B3, A3, G3, F#3, E3, D3, C#3, D2, D2.

Concert  
Gb

Musical notation for Set 2, Concert Gb. The scale is written in treble clef with a key signature of three flats (Bb, Eb, Ab). The notes are: Gb2, Gb2, Ab2, Ab2, Bb2, Bb2, C3, C3, D3, D3, Eb3, Eb3, E3, E3, F3, F3, Gb3, Gb3, Ab3, Ab3, Bb3, Bb3, C4, C4, Bb3, Ab3, G3, F3, Eb3, D3, C3, Bb2, Bb2.

Concert  
Bb  
Chromatic

Musical notation for Set 2, Concert Bb Chromatic. The scale is written in treble clef with a key signature of two flats (Bb, Eb). The notes are: Bb2, Bb2, C3, C#3, C#3, C3, C3, D3, D#3, D#3, D3, D3, Eb3, Eb3, E3, E#3, E#3, E3, E3, F3, F#3, F#3, F3, F3, G3, G#3, G#3, G3, G3, Ab3, Ab3, A3, A#3, A#3, A3, A3, Bb3, Bb3, Bb3, Bb3, C4, C4, Bb3, Ab3, G3, F3, Eb3, D3, C3, Bb2, Bb2.

Musical notation for Set 2, Concert Bb Chromatic (continued). The scale is written in treble clef with a key signature of two flats (Bb, Eb). The notes are: Bb2, Bb2, C3, C#3, C#3, C3, C3, D3, D#3, D#3, D3, D3, Eb3, Eb3, E3, E#3, E#3, E3, E3, F3, F#3, F#3, F3, F3, G3, G#3, G#3, G3, G3, Ab3, Ab3, A3, A#3, A#3, A3, A3, Bb3, Bb3, Bb3, Bb3, C4, C4, Bb3, Ab3, G3, F3, Eb3, D3, C3, Bb2, Bb2.

Horn in F  
Set 3

Concert G

Concert Cb

Concert Bb Chromatic

Set 4

Concert C

Concert E

Concert Bb Chromatic

# OkMEA Scale Sets

Trombone

## Set 1

Concert  
A



Concert  
Db



Concert  
Bb  
Chromatic



## Set 2

Concert  
D



Concert  
Gb



Concert  
Bb  
Chromatic



Set 3

2

Trombone

Concert  
G

Musical staff for Concert G, featuring a bass clef and a key signature of one sharp (F#). The melody consists of a series of eighth notes ascending and then descending, ending with a quarter rest.

Concert  
B

Musical staff for Concert B, featuring a bass clef and a key signature of three sharps (F#, C#, G#). The melody consists of a series of eighth notes ascending and then descending, ending with a quarter rest.

Concert  
Bb  
Chromatic

Musical staff for Concert Bb Chromatic, featuring a bass clef and a key signature of two flats (Bb, Eb). The melody consists of a series of eighth notes ascending and then descending, ending with a quarter rest.

Musical staff for Concert Bb Chromatic continuation, featuring a bass clef and a key signature of two flats (Bb, Eb). The melody consists of a series of eighth notes ascending and then descending, ending with a quarter rest.

Set 4

Concert  
C

Musical staff for Concert C, featuring a bass clef and a key signature of no sharps or flats (C). The melody consists of a series of eighth notes ascending and then descending, ending with a quarter rest.

Concert  
E

Musical staff for Concert E, featuring a bass clef and a key signature of four sharps (F#, C#, G#, D#). The melody consists of a series of eighth notes ascending and then descending, ending with a quarter rest.

Concert  
Bb  
Chromatic

Musical staff for Concert Bb Chromatic, featuring a bass clef and a key signature of two flats (Bb, Eb). The melody consists of a series of eighth notes ascending and then descending, ending with a quarter rest.

Musical staff for Concert Bb Chromatic continuation, featuring a bass clef and a key signature of two flats (Bb, Eb). The melody consists of a series of eighth notes ascending and then descending, ending with a quarter rest.

# OkMEA Scale Sets

Euphonium

## Set 1

Concert  
A



Concert  
Db



Concert  
Bb  
Chromatic



## Set 2

Concert  
D



Concert  
Gb



Concert  
Bb  
Chromatic



Set 3  
Euphonium

2

Concert  
G

Musical staff for Concert G, featuring a bass clef and a key signature of one sharp (F#). The melody consists of a series of eighth and sixteenth notes, ending with a quarter rest.

Concert  
B

Musical staff for Concert B, featuring a bass clef and a key signature of two sharps (F# and C#). The melody consists of a series of eighth and sixteenth notes, ending with a quarter rest.

Concert  
Bb  
Chromatic

Musical staff for Concert Bb Chromatic, featuring a bass clef and a key signature of two flats (Bb and Eb). The melody is a chromatic scale consisting of a series of eighth and sixteenth notes.

Musical staff for Concert Bb Chromatic continuation, featuring a bass clef and a key signature of two flats (Bb and Eb). The melody is a chromatic scale consisting of a series of eighth and sixteenth notes.

Set 4

Concert  
C

Musical staff for Concert C, featuring a bass clef and a key signature of no sharps or flats (C major). The melody consists of a series of eighth and sixteenth notes, ending with a quarter rest.

Concert  
E

Musical staff for Concert E, featuring a bass clef and a key signature of four sharps (F#, C#, G#, and D#). The melody consists of a series of eighth and sixteenth notes, ending with a quarter rest.

Concert  
Bb  
Chromatic

Musical staff for Concert Bb Chromatic, featuring a bass clef and a key signature of two flats (Bb and Eb). The melody is a chromatic scale consisting of a series of eighth and sixteenth notes.

Musical staff for Concert Bb Chromatic continuation, featuring a bass clef and a key signature of two flats (Bb and Eb). The melody is a chromatic scale consisting of a series of eighth and sixteenth notes.



Baritone T.C.

# OkMEA Scale Sets

## Set 1

Concert  
A



Baritone T.C.

Set 3

Concert  
G

Musical staff for Concert G, Set 3. The staff is in treble clef with a key signature of two sharps (F# and C#). The melody consists of a series of eighth and quarter notes, ending with a quarter rest.

Concert  
Cb

Musical staff for Concert Cb, Set 3. The staff is in treble clef with a key signature of three flats (Bb, Eb, and Ab). The melody consists of a series of eighth and quarter notes, ending with a quarter rest.

Concert  
Bb  
Chromatic

Musical staff for Concert Bb Chromatic, Set 3. The staff is in treble clef with a key signature of two flats (Bb and Eb). The melody is a chromatic scale consisting of eighth notes, ending with a quarter rest.

Musical staff for Concert Bb Chromatic, Set 3 (continued). The staff is in treble clef with a key signature of two flats (Bb and Eb). The melody is a chromatic scale consisting of eighth notes, ending with a quarter rest.

Set 4

Concert  
C

Musical staff for Concert C, Set 4. The staff is in treble clef with a key signature of one sharp (F#). The melody consists of a series of eighth and quarter notes, ending with a quarter rest.

Concert  
E

Musical staff for Concert E, Set 4. The staff is in treble clef with a key signature of four sharps (F#, C#, G#, and D#). The melody consists of a series of eighth and quarter notes, ending with a quarter rest.

Concert  
Bb  
Chromatic

Musical staff for Concert Bb Chromatic, Set 4. The staff is in treble clef with a key signature of two flats (Bb and Eb). The melody is a chromatic scale consisting of eighth notes, ending with a quarter rest.

Musical staff for Concert Bb Chromatic, Set 4 (continued). The staff is in treble clef with a key signature of two flats (Bb and Eb). The melody is a chromatic scale consisting of eighth notes, ending with a quarter rest.

# OkMEA Scale Sets

Tuba

## Set 1

Concert  
A

Concert A, Set 1: A single staff of music in bass clef with a key signature of two sharps (F# and C#). The scale consists of eight eighth notes: F#2, G2, A2, B2, C3, D3, E3, F#3. The piece concludes with a quarter rest followed by a quarter note G2.

Concert  
Db

Concert Db, Set 1: A single staff of music in bass clef with a key signature of three flats (Bb, Eb, and Ab). The scale consists of eight eighth notes: Bb1, C2, D2, Eb2, F2, G2, Ab2, Bb2. The piece concludes with a quarter rest followed by a quarter note Bb1.

Concert  
Bb  
Chromatic

Concert Bb Chromatic, Set 1: A single staff of music in bass clef with a key signature of two flats (Bb and Eb). The scale consists of sixteen eighth notes: Bb1, B1, C2, C#2, D2, D#2, Eb2, E2, F2, F#2, G2, G#2, Ab2, A2, A#2, Bb2. The piece concludes with a quarter rest followed by a quarter note Bb1.

Continuation of Concert Bb Chromatic, Set 1: A single staff of music in bass clef with a key signature of two flats (Bb and Eb). The scale consists of sixteen eighth notes: Bb1, B1, C2, C#2, D2, D#2, Eb2, E2, F2, F#2, G2, G#2, Ab2, A2, A#2, Bb2. The piece concludes with a quarter rest followed by a quarter note Bb1.

## Set 2

Concert  
D

Concert D, Set 2: A single staff of music in bass clef with a key signature of two sharps (F# and C#). The scale consists of eight eighth notes: F#2, G2, A2, B2, C3, D3, E3, F#3. The piece concludes with a quarter rest followed by a quarter note G2.

Concert  
Gb

Concert Gb, Set 2: A single staff of music in bass clef with a key signature of three flats (Bb, Eb, and Ab). The scale consists of eight eighth notes: Bb1, C2, D2, Eb2, F2, G2, Ab2, Bb2. The piece concludes with a quarter rest followed by a quarter note Bb1.

Concert  
Bb  
Chromatic

Concert Bb Chromatic, Set 2: A single staff of music in bass clef with a key signature of two flats (Bb and Eb). The scale consists of sixteen eighth notes: Bb1, B1, C2, C#2, D2, D#2, Eb2, E2, F2, F#2, G2, G#2, Ab2, A2, A#2, Bb2. The piece concludes with a quarter rest followed by a quarter note Bb1.

Continuation of Concert Bb Chromatic, Set 2: A single staff of music in bass clef with a key signature of two flats (Bb and Eb). The scale consists of sixteen eighth notes: Bb1, B1, C2, C#2, D2, D#2, Eb2, E2, F2, F#2, G2, G#2, Ab2, A2, A#2, Bb2. The piece concludes with a quarter rest followed by a quarter note Bb1.

Set 3

Concert  
G

Musical notation for Concert G, featuring a bass clef and a key signature of one sharp (F#). The melody consists of a series of eighth notes ascending and then descending, ending with a quarter rest.

Concert  
B

Musical notation for Concert B, featuring a bass clef and a key signature of three sharps (F#, C#, G#). The melody consists of a series of eighth notes ascending and then descending, ending with a quarter rest.

Concert  
Bb  
Chromatic

Musical notation for Concert Bb Chromatic, featuring a bass clef and a key signature of two flats (Bb, Eb). The melody is a chromatic scale consisting of eighth notes, both ascending and descending, ending with a quarter rest.

Set 4

Concert  
C

Musical notation for Concert C, featuring a bass clef and a key signature of no sharps or flats (C major). The melody consists of a series of eighth notes ascending and then descending, ending with a quarter rest.

Concert  
E

Musical notation for Concert E, featuring a bass clef and a key signature of four sharps (F#, C#, G#, D#). The melody consists of a series of eighth notes ascending and then descending, ending with a quarter rest.

Concert  
Bb  
Chromatic

Musical notation for Concert Bb Chromatic, featuring a bass clef and a key signature of two flats (Bb, Eb). The melody is a chromatic scale consisting of eighth notes, both ascending and descending, ending with a quarter rest.